



# The Society of Broadcast Engineers

**Fox Valley Wisconsin SBE Chapter 80**  
**PO Box 1519**  
**Appleton, WI 54912-1519**

**March 2012**

The next meeting of SBE Chapter 80 will be at the Out O' Town Club at noon Tuesday March 20<sup>th</sup>. Our speaker will be Mary Ann Seidler of TieLine

## Chairman's Corner

Welcome to our eNewsletter!



Our next meeting of Chapter 80 will be on Tuesday, March 20, 2012 at noon at the Out O' Town Club in Kaukauna. Our guest speaker will be Mary Ann Seidler of TieLine to discuss the changing nature of audio remotes. The presentation will discuss the evolution of remote broadcast equipment, with a particular focus on the latest technology and what's in store for the future. It will examine the various types of remote connectivity, focusing on what works and what doesn't.

Mary Ann Seidler, has over 25 years' experience in the broadcast industry, with a specialization in audio compression. She will bring the presentation alive with real world stories of remote broadcast challenges and triumphs from Bangladesh to Bangor. Mary Ann welcomes you to bring your own questions, challenges, and stories to this lively, informative session. Please bring a friend and plan to join us!

Our last meeting was Tuesday, February 14, 2012 at the Out 'O Town Club in Kaukauna. Our guest speaker was David Veldman of Harris. The program, video compression and digital media formats in today's broadcast environment.

Thank you to David Veldman and Burt Young of Harris for an interesting and informative program.

If you know of any member who is not receiving the electronic version of the monthly newsletter, please send us their email address. The Newsletter will also be posted on our website

<http://www.sbe80.org>, and archive copies, as well as other Chapter 80 and SBE information are available as well.

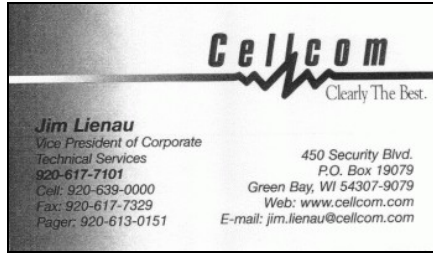
## Upcoming events:

- Thursday April 19, 2012 WI Tornado and Severe Weather Awareness Drill with *live* EAS code test
- Tuesday, April 24, 2012 - SBE Chapter 80 - NAB Review
- Tuesday, May 15, 2012 - SBE Chapter 80 - CCCP Annual Technology Expo
- Wednesday, June 20, 2012 - WBA/SBE Summer Engineering Clinic - Radisson La Crosse, WI. Mark your calendars and plan to attend!
- Tuesday, July 17, 2012 - SBE Chapter 80 Summer Picnic - TBD

I look forward to seeing you on Tuesday March 20<sup>th</sup>, 2012 at our Chapter 80 monthly meeting at the Out O' Town Club in Kaukauna.

Regards,  
Timothy J. Laes

*Still need to renew your SBE membership? Renew now using our easy [automated SBE renewal system](#).*



## SBE launches new blog

The Society of Broadcast Engineers Membership [Blog](#) is the latest edition to the SBE network of social media outlets. The blog connects followers with information from the SBE national office including new developments in membership, JobsOnline, chapter news, certification, education and discounted technical books.

The SBE also has active [LinkedIn](#), [Facebook](#) and [Twitter](#) pages to connect with members of the broadcast engineering industry. The LinkedIn group is a closed group for members of the SBE and the industry only. The SBE Facebook page allows visitors to see society updates and photos, but the SBE Facebook Group allows only members of the SBE who request permission to join the discussion. Anyone may visit SBEorg on Twitter to see recent posts.



Society discussion group members are able to send and receive messages to all group members by email. Members of the SBE may subscribe to any three of the following active discussion groups:

- [SBE Roundtable](#) - an ongoing discussion about engineering and the SBE
- [SBE Chat](#) - a general topic discussion form for members
- [SBE Exchange](#) - continuous discussion about the Emergency Alert System.

Visit the blog at <http://blog.sbe.org> or find a link to the blog on the SBE homepage. Start the conversation and join, follow, mention, comment on or link to the SBE today.



(sbe.org)

## Atmospheric Conditions Favoring HF Contributed by Fred Baumgartner, CPBE, CBNT, KØFMB

Many members of the SBE are also Amateur Radio Operators. If you are, and are active on Short Wave, you have been watching the sunspot numbers for the 11-year cycle to peak and make those around-the-world paths open again. Given that many broadcast engineers around the world are also hams, this ham has spent some pleasant hours learning about New Zealand, Australian and Chilean broadcasting when the atmospheric conditions are right. A good sign might be that last month's [SBE Chapter 73 of the Air \(SBE HAMnet\)](#), which meets on 14.205 MHz the second Sunday of every month at 0000Z, logged more check-ins than any time in the last decade. Long time SBE HAMnet control, Hal Hostettler, CPBE, WA7BGX, ran out of log paper. It's clear that the sun spots are back! (sbe.org)

## Job opening - UW-Platteville

Location: Grant

Classification Title(s)/JAC: ELECTRONICS

TECHNICIAN - MEDIA - INT 12-00749 Job Working

Title(s): Electronics Technician Media Intermediate Type

of Employment: Full Time (40 hrs/week)

Details can be found at:

<http://www.uwplatt.edu/pers/employ/Class-12-00749.htm>

Tim Trendt

University of Wisconsin-Platteville

Media Technology Services

1150  
WHBY  
105.7  
WAPL  
95.9  
WKSZ  
94.7  
WZOR  
1570  
WSCO  
104.3  
WCHK

**Woodward Communications, Inc.**  
BROADCAST DIVISION  
A Dynamic, Employee Owned Media Company  
Good People - Real Solutions - Shared Results  
P.O. Box 1519 • Appleton, WI 54912-1519  
Fax 920-739-0494 • gbell@wcinet.com

**GREG BELL**  
VP Broadcast / General Manager  
Direct 920-831-5655  
Mobile 920-570-2162

**Joseph P. Kaufenberg**  
Account Manager  
Broadcast & Production Systems Division

**SONY**

Sony Electronics Inc.  
1422 138th Lane NW  
Andover, Minnesota 55304  
Telephone (763) 755-2501  
Fax (763) 755-2495  
Cellular (612) 237-3368  
E-mail: joe.kaufenberg@am.sony.com

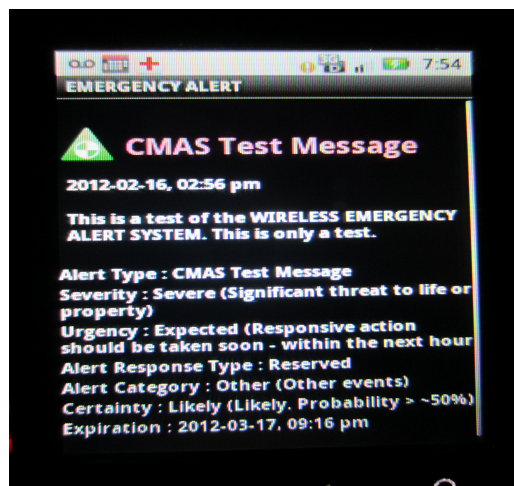
**Tony Primavera**  
Office: 920.617.7100  
Fax: 920.617.7021  
1046 Gray Ct.  
Green Bay, WI 54303  
www.stpaultower.com

**ST. PAUL TOWER**  
Dedicated To Excellence

NAB  
WATE  
SBC

## CHAPTER 80 ELECTED AND APPOINTED OFFICERS 2011-2012

Chairman	Tim Laes	WGEE WIXX WNCY WROE	920-435-3771	tlaes@new.rr.com
Vice Chairman	Steve Konopka	WPNE TV/FM	920-336-3541	skonopka@ecb.org
Treasurer	Steve Brown	WHBY WAPL WKSZ WZOR	920-733-6639	sbrown@wcinet.com
Secretary	Keith Kintner	UWO	920-424-7357	kintner@uwosh.edu
Program Chairman	John Pfankuch	Heartland Video Systems	920-893-0204	jpfankuch@hvs-inc.com
Program Chairman	Bill Hubbard	UW Green Bay	920-465-2510	hubbardw@uwgb.edu
Membership Chairman	Al Kilgore	WRVM	920-842-2839	akilgore@wrvm.org
Sustaining Memberships	Greg Tadyshak		920-438-3258	gtadyshak@new.rr.com
Frequency Coord. < 1 GHz	Tim Laes	WGEE WIXX WNCY WROE	920-435-3771	tlaes@new.rr.com
Frequency Coord. > 1 GHz	Joe Kamenick	KAMENTECH, LLC	715-359-7088	jckamenick@peoplepc.com
Newsletter Editor	Bill Tessman	Heartland Video Systems	920-893-4204	btessman@hvs-inc.com
Newsletter Editor	Dave Driessen	WGBA WACY	920-494-2626	ddriessen@nbc26.com
Certification Chairman	Jim Sams	UWGB	920-465-2572	samsj@uwgb.edu
Chapter 80 Webmaster	Jim Jensen	Retired	920-850-2633	jim@bjensen.net
EAS Coordinator	Steve Konopka	WPNE TV/FM	920-336-3541	skonopka@ecb.org
Past Chairman	Keith Kintner	UWO	920-424-7357	kintner@uwosh.edu
Board of Dirs/SBE Liaison	Keith Kintner	UWO	920-424-7357	kintner@uwosh.edu



**The 'other' Emergency alert System.** A test I received on my phone the other day.

The Commercial Mobile Alert System (CMAS), is an alerting network designed to disseminate emergency alerts to mobile devices such as cell phones and pagers. CMAS will allow federal agencies to accept and aggregate alerts from the President of the United States,

the National Weather Service and emergency operations centers, and send the alerts to participating wireless providers who may distribute the alerts to their customers via text messages. The government plans to issue three types of alerts through this system: alerts issued by the president, alerts involving imminent threats to safety of life, and Amber Alerts. Although not mandatory, several wireless providers, including T-Mobile, AT&T, Sprint Nextel, and Verizon have announced their willingness to participate in the system. Providers who do not wish to participate must notify their customers.

Customers will be automatically signed up to receive PLAN alerts. If they do not want to participate they may opt to block most PLAN messages, however messages issued by the president cannot be blocked under any circumstances.

Public television stations are also required by the FCC to act as a distribution system for CMAS alerts. Within 18 months of receiving funding from the Department of Commerce, all public television stations must be able to receive CMAS alerts from FEMA and transmit them to participating wireless service providers (Wikipedia)

*The SBE Chapter 80 Newsletter is published monthly. Members are welcome to contribute articles or ideas. Please have your submissions in by the 4<sup>th</sup> of the month to Dave Driessen or Bill Tessman*

**Panasonic**  
ideas for life

Panasonic Broadcast & Television Systems Company  
Unit of Panasonic Corporation of North America

3910 Orleans Lane North  
Plymouth, MN 55441  
Tel: 763.545.0157  
Fax: 763.542.6011  
Johnsons@us.panasonic.com

**Steve Johnson**  
District Sales Manager

1150  
WHBY  
105.7  
WAPL  
95.9  
WKSZ  
94.7  
WZOR  
1570  
WSCO  
104.3  
WCHK

**STEVE BROWN, CPBE, CBNT**  
Director of Broadcast Engineering  
Direct 920-831-5659  
W9APL Amateur Call Sign

**Woodward Communications, Inc.**  
BROADCAST DIVISION  
A Dynamic, Employee Owned Media Company  
Good People - Real Solutions - Shared Results  
P.O. Box 1519 • Appleton, WI 54912-1519  
Fax 920-739-0494 • sbrown@wcinet.com

**Jim Pianowski**  
Sales Representative

**ROSCOR**  
Media & Information Technologies

ROSCOR CORPORATION  
1061 Feenhanville Drive  
Mount Prospect, IL 60056  
1-847-299-8080 x1343  
1-800-843-3679  
fax: 1-847-299-4206  
jpianowski@roscor.com  
www.roscor.com

ISO 9001:2000 CERTIFIED



## WISCONSIN PUBLIC RADIO'S 2012 EAS SCHEDULE

DAY/DATE TIME  
COMMENT.....

W 7 Mar 0850 Routine Monthly Test initiated  
by NOAA  
R 15 Mar 1059  
M 19 Mar 1459  
T 27 Mar 1259

W 4 Apr 2350 Routine Monthly Test initiated  
by ECB  
R 12 Apr 1059  
M 16 Apr 1459  
T 24 Apr 1259

W 2 May 0850 Routine Monthly Test initiated  
by NOAA  
R 10 May 1059  
M 14 May 1259  
T 22 May 1459  
W 30 May 1059

W 6 Jun 2350 Routine Monthly Test initiated  
by WEM  
R 14 Jun 1459  
M 18 Jun 1259  
T 26 Jun 1059

✈ [Current Wisconsin EAS Plan](#)

<http://www.wpr.org/eas/>

### Certification exams April 17 in Las Vegas

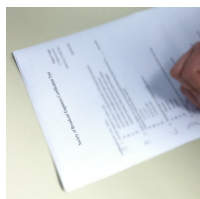
If you would like to take an exam during 2012, you must first send in your [application](#).

If you are attending [NAB](#), take this opportunity to take a certification exam. The SBE certification exams will take place at the Las Vegas Hotel and Casino on Tuesday, April 17 from 9:00 AM to Noon.

You must first apply for the exam. [Applications](#) must be filled out and sent to the SBE National office by March 23, 2012.

### 2012 Certification opportunities

Exams will also be held in June, August and November within the local SBE chapter area. Please review the



[exam schedule and application deadlines](#) on the SBE website.

If you are interested in [SBE certification](#), but you are not sure which certification is right for you, visit the SBE website to review the different [levels](#) of SBE certification.

If you have any questions, please contact the Certification Director, [Megan Clappe](#).

### Webinars by SBE - live and on-demand

#### [Featured Webinar by SBE - TV White Space Devices and Wireless Microphones](#)

*Presented by Joe Snelson, CPBE, 8-VSB*

The FCC is now allowing unlicensed wireless devices to operate in vacant, or TV White Space, channels as well as accommodating unlicensed microphone use. This webinar provides an overview of what the FCC has authorized for unlicensed devices and how this will impact the daily operations of a broadcaster, news organization or production company.

Presenting this webinar is Joe Snelson, CPBE, 8-VSB, Vice President for the Society of Broadcast Engineers. Snelson is currently Vice President of Engineering for the Meredith Local Media Group. He is a member of the National Association of Broadcasters TV Technology Committee. He also chairs the SBE National Frequency Coordination Committee, and serves on the SBE National Certification Committee.

This webinar is **FREE** to SBE members thanks to:

**SHURE®**  
LEGENDARY  
PERFORMANCE™

**Date:** May 2, 2012 · 2-3 p.m. ET

**Cost:** SBE members - \$0; non-members - \$39

#### [More Information and Registration](#)

#### Get a job in Florida!

WMBB is looking for an experienced broadcast engineer to work at the TV station. Contact

Laurence Richesin

Chief Engineer

WMBB-TV

613 Harrison Ave.

Panama City, FL 32401

850-392-1190

850-769-2313

Lrichesin@wmbb.com

www.wmbb.com

WMBB Newsroom: 850-763-6000

# Tornado and Severe Weather Awareness Week / April 16-20

## Statewide Tornado Drill: April 19th

**Mock Tornado Watch: 1pm / Mock Tornado Warning: 1:45pm**

[Click here for important information on times and details of the drill](#)

[Click here for more information on the Tornado Drill in Wisconsin Schools](#)

### Listen, Act and Live!



May 22, 2011....one of the deadliest tornadoes in U.S. history strikes Joplin, Missouri directly killing 159 people and injuring over 1,000. The massive EF-5 with winds over 200 mph hit the city of more than 50,000. Despite the tornado warnings why there were so many deaths? A National Weather Service study on the Joplin tornado reveals important lessons learned:

- A majority of residents did not immediately seek shelter when tornado warnings were issued.
- People needed between two and nine risk signals to take action and seek shelter. For example, if they heard the sirens going off they would look in the sky, then go to a TV to get information and then call a friend, etc.

- The time it took between the warning and the search for confirmation of risk cost lives.

What can you do?

- **Listen:** When severe weather is possible (Thunderstorm or Tornado Watch issued) pick a credible source of information and keep in touch with that source until the danger has past. One of the best tools is a NOAA Weather Radio (also known as an Emergency Weather Radio). [Click here for more information on NOAA Weather Radios](#)
- **Act:** When you hear a tornado warning (tornado seen by spotters or detected on radar) seek the best shelter you can find immediately. Don't waste time checking multiple sources of information. You may have only seconds to find a safe place. [Click here for more information on best shelter](#)
- **Live:** Your chances of survival multiply. Hopefully the storm will pass with no damage. But don't risk your life on a hope.

Unfortunately, 2012 tornado season is starting early and deadly. There have been more than 300 twisters already with 81 on March 2-3 alone. 39 lives were lost in those storms. Track the latest 2012 information from the [Storm Prediction Center](#).



Here are some Severe Weather Fast Facts:

- Wisconsin averages 23 tornadoes annually.
- In 2011, 38 tornadoes in Wisconsin were confirmed by the National Weather

Service, the fourth highest number on record. The earliest outbreak occurred on April 10th. On August 19th, a man was killed when a tornado with winds of 105 mph struck Marinette County. Five others were injured in 2011. Click here for more in-depth stats from the National Weather Service.

- In 2010, 46 tornadoes in Wisconsin were confirmed by the National Weather Services, the second greatest yearly number on record. Fortunately, no one was killed but 22 were injured and the tornadoes caused nearly \$30 million in property damage.
- The peak tornado season in Wisconsin is April to August, but tornadoes can occur any time of year, like the January 7, 2008 storms near Kenosha.

## 2012 Tornado and Severe Weather Awareness Drill

### Scheduled for Thursday April 19, 2012

There are two new and important changes to the 2012 Tornado Drill.

First, the drill times have changed with all counties participating in the mock tornado warning at the same time.

#### DRILL SCHEDULE:

**1:00 pm – National Weather Service issues a mock tornado**

**watch** for all of Wisconsin (a watch means tornadoes are possible in your area. Remain alert for approaching storms).

**1:45pm - National Weather Service issues mock tornado warning** for all of Wisconsin (a warning means a tornado has been sighted or indicated on weather radar. Move to a place of safety immediately).

**2:00 pm - END OF MOCK TORNADO WATCH/WARNING DRILL**

If actual severe weather occurs anywhere in the state on April 19, the tornado drill will be postponed until Friday, April 20 with the watch/warning issued at the same time.

Second, the drill will be a true, end-to-end test involving interruption of broadcast radio, TV and cable stations and tone-alerting of the test watch and warning on NOAA Weather Radios (also

known as Emergency Weather Radios). This is an historic first in Wisconsin. The tornado warning at 1:45pm will last about one minute on radio and TV stations across Wisconsin. (The drill will also occur at the same time in Minnesota and will be broadcast on radio and TV stations in that state as well). When it is done stations will return to normal programming. Television viewers and radio station and emergency radio listeners will hear a message indicating that **"this is a test."**

### Frequently Asked Questions about the Tornado Test

**How does the National Weather Service deliver this tornado test and real tornado watches and warnings?** They use something called the Emergency Alert System.

**What is the Emergency Alert System (EAS)?** EAS is a national public alert and warning system that enables the President of the United States to address the American public during extreme emergencies. Alerting authorities like the National Weather Service can also use the state and local EAS to send alerts and warnings to radio and television stations, cable television, and NOAA Weather Radios (also known as Emergency Weather Radios).

**Why do this test?** The National Weather Service, Wisconsin Emergency Management and the Wisconsin Broadcasters Association felt it was important to allow the public to truly test their NOAA Weather Radio receivers which can only be activated using a real Tornado Warning code.

**The Federal Communications Commission (FCC) required a waiver for this Live Code Testing to**

**be conducted.** This code also triggers the alert to air on broadcast radio, TV and cable stations. The ultimate goal of any drill is to test all electronic systems that alert Wisconsin citizens for impending severe weather that can result in the loss of life and property. Conducting a live, end-to-end drill accomplishes this goal by tone-alerting watches and warnings on NOAA Weather Radio and broadcasting them through media outlets.

**What Can I Expect to Hear/See?** The test may look like regular, local EAS tests that most people are already familiar with, but there will be some differences in what viewers will see and hear. The audio message will repeat "This is a test." **The video message scroll may not indicate "This is a test" due to programming limitations.** The message will last for approximately one minute and then regular programming will resume.



**Where Will I Hear/See the Test?** On all participating radio, television, cable providers (who are called EAS Participants) and NOAA Weather Radios.

**When Will the Test Occur?** April 19th at 1:45 PM (central time). That is the same time the test will be conducted in Minnesota as well as Wisconsin.

*All of the above content from*  
([readywisconsin.wi.gov](http://readywisconsin.wi.gov))



## ***Tornado Myths and Truths***

**MYTH:** Areas near lakes, rivers, and hills are safe from tornadoes.

**TRUTH:** No place is safe from tornadoes. The tornado that struck Door County in August 1998 formed on the waters of Green Bay and moved onshore, causing over \$5 million in damage.

**MYTH:** The low pressure with a tornado causes buildings to explode as the tornado passes overhead.

**TRUTH:** Violent winds and debris slamming into buildings cause most structural damage.

**MYTH:** Windows should be opened before a tornado approaches to equalize pressure and minimize damage.

**TRUTH:** Leave windows alone. The most important action is to immediately go to a safe shelter.

**MYTH:** People caught in the open should seek shelter under highway overpasses.

**TRUTH:** Take shelter in a sturdy, reinforced building if at all possible. The winds of a tornado may actually increase in the tight space of an overpass, increasing the chance for injury.