



The Society of Broadcast Engineers

Fox Valley Wisconsin SBE Chapter 80
PO Box 1519
Appleton, WI 54912-1519

February 2015

Like us on FaceBook - facebook.com/sbe80

Our website sbe80.org

Twitter: @sbechapter80

Our next SBE Chapter 80 meeting will be Tuesday February 17th at the Out-O-Town Club in Kaukauna at noon. Our Speaker will be Jeff Feldt and Mike Penderson of Kaukauna Electric and Water

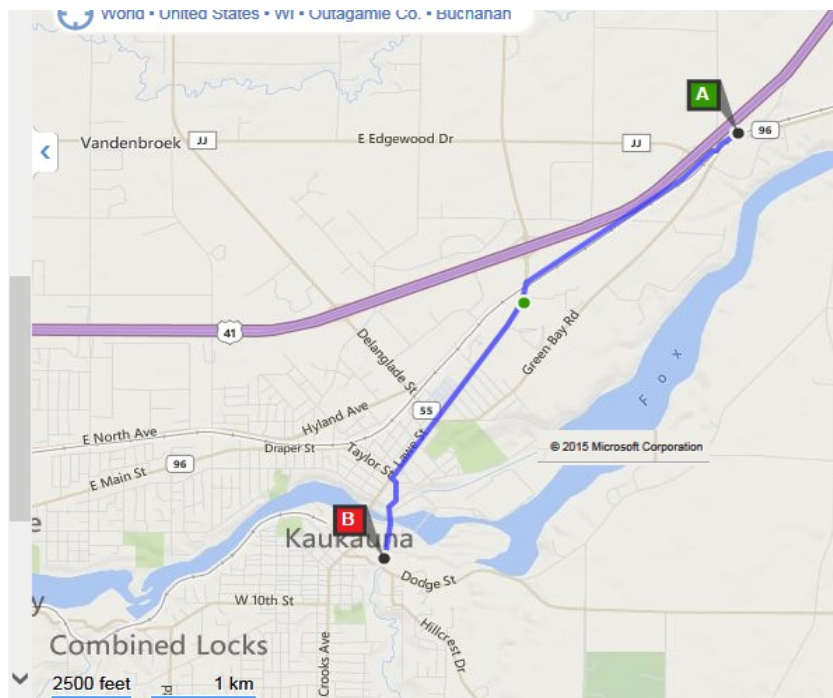
Chairman's Corner

Hello everyone, members and guests are welcome at our next Chapter 80 meeting and facilities tour to be held on Tuesday, February 17th. We will meet at Out O' Town Club in Kaukauna for 12:00 noon lunch, after which we will welcome Mr. Jeff Feldt and Mr. Mike Pedersen of Kaukauna Electric and Water who will provide a power point presentation on hydropower generation. We will then proceed to the KEW power station on Island Street for a tour of both old and new hydro plants. Our last meeting was on January 20th, where we enjoyed a great presentation by Mr. Harvey Arnold of Sinclair Broadcasting.

Please visit our Chapter 80 website www.sbe80.org for more items of regional interest.

Regards, Steve Konopka

- Depart Town Club Rd toward E Frontage Rd
- 0.2 mi
Turn left onto E Frontage Rd
 - 1.4 mi
Turn left onto CR-J
 - 1.1 mi
Keep straight onto WI-55 / WI-96 / Lawe St
 - 0.5 mi
Turn left onto Catherine St
McDonald's on the corner
 - 0.3 mi
Road name changes to Island St
 - 0.2 mi
Arrive at 777 Island Street · Po Box 1777 · Kaukauna, WI
The last intersection is Maple St
If you reach Dodge St / CR-Z, you've gone too far





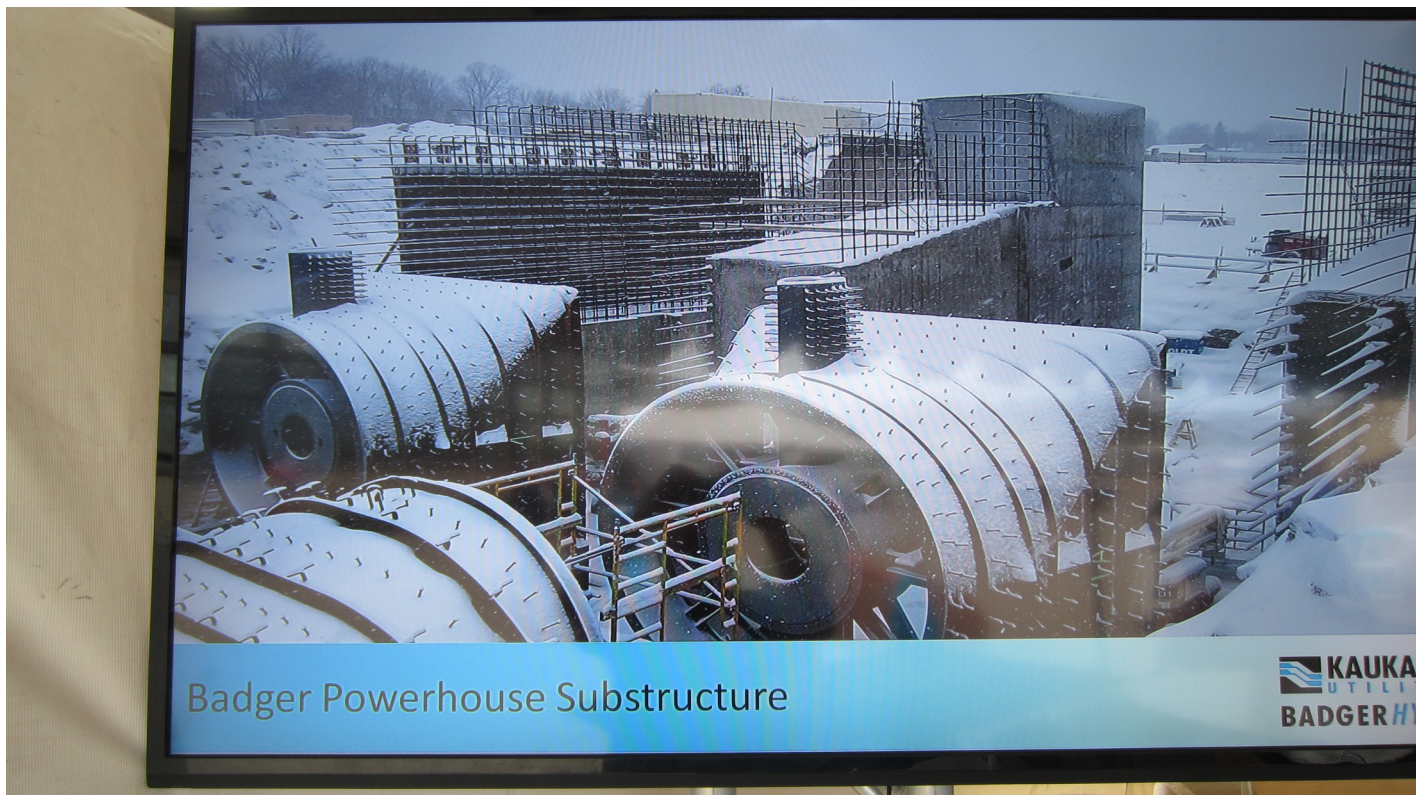
Area during construction (google maps)



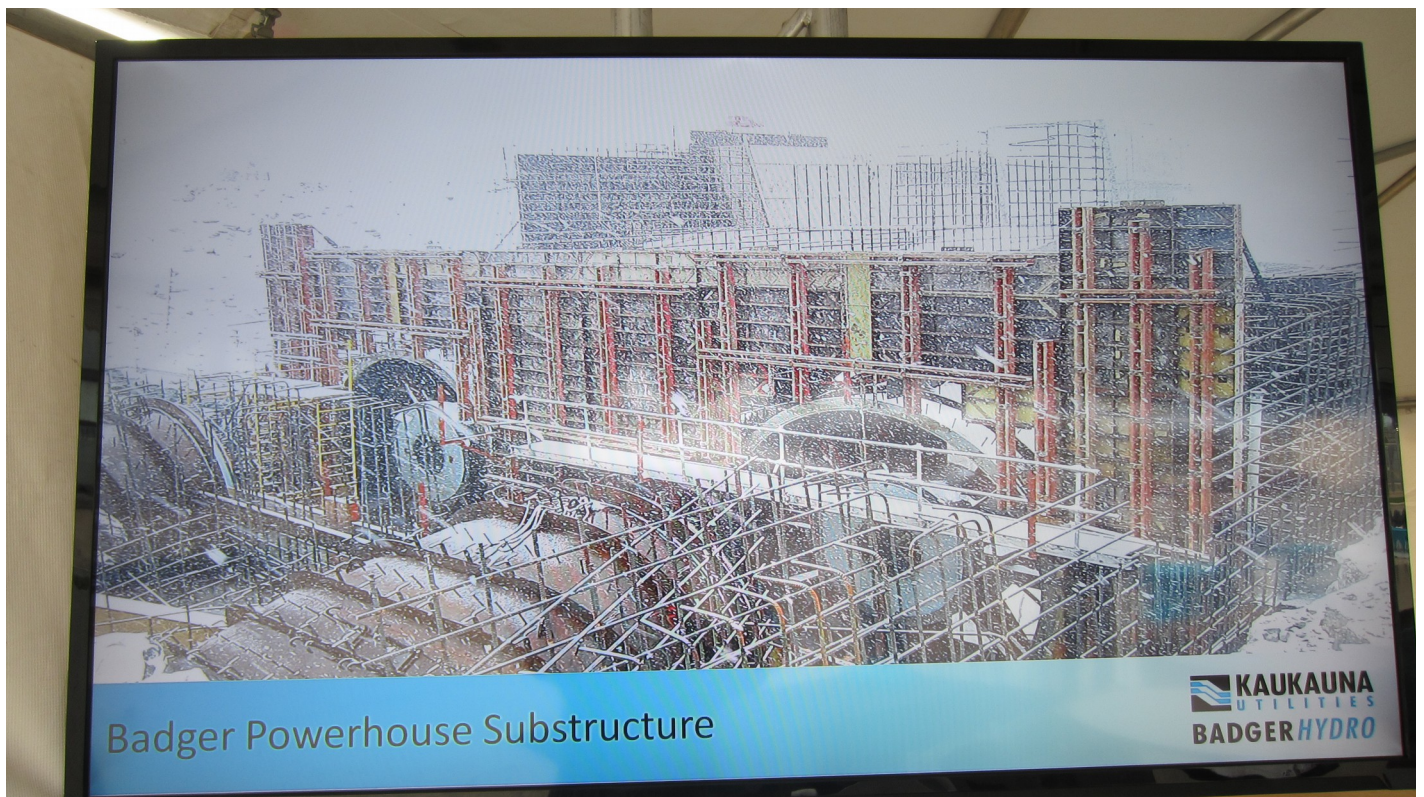
The intake side.. (these are KU pictures from the open house I attended last year)



The intake side now.



This whole works is under the floor of the power house



Under a LOT of concrete...



Pouring concrete 1 of 3..



Badger Powerhouse Generator Substructure



2 of 3...



Badger Powerhouse Generator Sub-Floor



3 of 3...



It was off during the open house I attended last year.. (dd)

Certification Application Deadlines Approaching

2015 EXAM SESSION

June 5-15

August 7-17

November 6-16

APPLICATION DEADLINE

April, 10, 2015

June 5, 2015

October 2, 2015

If you have any questions contact the Certification Director, [Megan Clappe](#).

Click [HERE](#) for the certification applications. If you have any questions contact the Certification Director, [Megan Clappe](#).

CHAPTER 80 ELECTED AND APPOINTED OFFICERS 2011-2012

Chairman	Steve Konopka	WPNE TV/FM	920-336-3541	skonopka@ecb.orgn
Vice Chairman	Tim Laes	WGEE WIXX WNCY WROE	920-435-3771	tlaes@new.rr.com
Treasurer	Steve Brown	WHBY WAPL WKSZ WZOR	920-733-6639	sbrown@wcinet.com
Secretary	Keith Kintner	UWO	920-424-7357	kintner@uwosh.edu
Program Chairman	John Pfankuch	Heartland Video Systems	920-893-0204	jpfankuch@hvs-inc.com
Program Chairman	Bill Hubbard	UW Green Bay	920-465-2510	hubbardw@uwgb.edu
Membership Chairman	Mark Friedman	WPNE TV/FM	920-336-3541	mfriedman@ecb.org
Sustaining Membership	Stu Muck	Muck Broadcast services	920-960-0045	MBSFDL@yahoo.com
Frequency Coord. < 1 GHz	Tim Laes	WGEE WIXX WNCY WROE	920-435-3771	tlaes@new.rr.com
Frequency Coord. > 1 GHz	Joe Kamenick	KAMENTECH, LLC	715-359-7088	jckamenick@peoplepc.com
Newsletter Editor	Bill Tessman	Heartland Video Systems	920-893-4204	btessman@hvs-inc.com
Newsletter Editor	Dave Driessen	WGBA WACY	920-494-2626	ddriessen@nbc26.com
Certification Chairman	Jim Sams	Retired	920-822-5951	jsams@netnet.net
Chapter 80 Webmaster	Mike Steele	WHBY	920-831-5605	msteele@wcinet.com
EAS Coordinator	Steve Konopka	WPNE TV/FM	920-336-3541	skonopka@ecb.org
Board of Dirs/SBE Liaison	Keith Kintner	UWO	920-424-7357	kintner@uwosh.edu

SBE Files FCC Comments on Wireless Mic and Lower-Power Auxiliary Service Devices Spectrum

The Society of Broadcast Engineers, the Association for Broadcast and Multimedia Technology Professionals, filed comments on February 4 with the Federal Communications Commission to GN Docket 14-166 and GN 12-268, noting the importance of preserving broadcasters' long-term usage of wireless microphones and low-power auxiliary service devices. In a series of actions, the FCC has increasingly restricted available UHF TV spectrum that has been used for the wireless purposes. In its filing, the SBE urges the FCC to explore and authorize replacement or additional spectrum for broadcasters and media producers.

The SBE highlighted the various FCC rulings, including elimination of the 700MHz band for wireless mics and over-the-air use, that have adversely affected the available spectrum. Further, the addition of TV white-space devices, most of which are unlicensed, has packed more users into an increasingly smaller available spectrum. And while the FCC has relaxed wireless mic usage restrictions for broadcasters, it is insufficient. In addition, the FCC has issued a series of rulings that have further affected available spectrum, including a spectrum auction in the 600MHz band.

The FCC has sought comments on a variety of possible replacement bands, but the SBE points out that these proposals all have significant shortcomings for broadcast use. Further, any action to authorize spectrum must be allocated with a long-term view. Equipment users cannot afford to constantly buy or update, when an update is possible, the necessary equipment to use the spectrum.

SBE President Joe Snelson, CPBE, 8-VSB, says, "The main point of the SBE filing is to suggest that at least 12MHz of spectrum, and ideally 24MHz of spectrum, should be allocated and protected for wireless mic and low-power auxiliary service devices in the UHF TV spectrum."

The [SBE filing is available on the SBE website](#) under the Legislative/Advocacy menu.

Missed the Free SBE HD Radio Webinar? Watch it On-demand!

If you weren't able to attend the SBE webinar, "HD Radio Advancement and Trends," presented by Alan Jurison, you can access the archived version. More than 150 people attended it live, presented free to SBE members, thanks to the support from iBiquity Digital. [Access the webinar at the SBE website](#). All SBE webinars are recorded, archived and available for viewing, 24/7/365.

Missed "Chief Operator Responsibilities - What should I be doing" Webinar? Watch it Online!

Weren't able to attend the SBE webinar, "Chief Operator Responsibilities - What should I be doing" by Dennis Baldrige? No problem! 100 people attended the live version and now it is available on-demand. [Register](#) at the SBE website. [All SBE webinars](#) are recorded, archived and available for viewing, 24/7/365.

Discounted NAB Show registration rate available to SBE members



The 2015 NAB Show in Las Vegas is not far off. The annual event, the largest media industry event in the world, runs April 11 through the 16. Members of the SBE who do not have the NAB member rate available to them may register for the event at a \$100 discount off the non-NAB member rate. Use the special discount code, SD02. You can also go directly to the [NAB Show registration page](#) and the code is already embedded in the link. The code is good for \$100 off Flex or SMART pass non-member registration, or a free Expo-Only registration. After March 27, 2015, the NAB will include a processing fee of \$25 with all registrations that use the discount code.

WPR's 2015 EAS Schedule

DAY	DATE	TIME	COMMENT.....
W	4 Feb	2350	Routine Monthly Test initiated by WEM
R	12 Feb	1459	
M	16 Feb	1059	
M	23 Feb	1259	
W	4 Mar	0850	Routine Monthly Test initiated by NOAA
R	12 Mar	1059	
M	16 Mar	1459	
T	24 Mar	1259	
W	1 Apr	2350	Routine Monthly Test initiated by ECB
R	9 Apr	1259	
M	13 Apr	1459	
T	21 Apr	1259	
M	27 Apr	1059	
W	6 May	0850	Routine Monthly Test initiated by NOAA
R	14 May	1059	
M	18 May	1259	
T	26 May	1459	
W	3 Jun	2350	Routine Monthly Test initiated by WEM
R	11 Jun	1459	
M	15 Jun	1259	
T	23 Jun	1059	

Cellcom
Clearly The Best.

Jim Lienau
Vice President of Corporate
Technical Services and CTO
920-617-7101
Cell: 920-639-0000
Fax: 920-617-7329
Pager: 920-613-0151

450 Security Blvd.
P.O. Box 19079
Green Bay, WI 54307-9079
Web: www.cellcom.com
E-mail: jim.lienau@cellcom.com

EVANS ENGINEERING SOLUTIONS

216 Green Bay Rd., Suite 105
Thiensville, WI 53092-1625
www.evansengsolutions.com

PROBLEM SOLVING BEYOND EXPECTATIONS

Ben Evans, P.E.
President

Phone: (262) 518-0002 • Cell: (414) 530-8234
Email: ben@evansengsolutions.com

RENEWABLE ENERGY • WIRELESS COMMUNICATIONS • BROADCAST

WOODWARD RADIO GROUP

Greg Bell
VP Broadcast/General Manager

Direct 920.831.5655
Cell 920.570.2162 • gbell@wrcnet.com
PO Box 1519 • Appleton, WI 54912-1519

WOODWARD RADIO GROUP

HVS

Mark Bartolotta
Regional Sales Manager

Heartland Video Systems, Inc.
1311 Pilgrim Road
Plymouth, WI 53073
Dir: (920) 893-6743
Tel: (800) 332-7088
Cell: (920) 912-1054
Fax: (920) 893-3106
EMAIL: mibart@hvs-inc.com
www.hvs-inc.com

Broadcast & Professional Solutions
CONVERSION • STORAGE • COMPRESSION • TRANSMISSION
AUTOMATION • ROUTING • MONITORING • INTEGRATION

BELDEN
SENDING ALL THE RIGHT SIGNALS

Don Heinzen
Account Manager
Enterprise Solutions Division

Direct: 608.848.2001
don.heinzen@belden.com
9001 Hawks Reserve Lane, #103
Verona, WI 53593
Cell: 608.235.7539

www.belden.com

American Communications
LeDuc Properties, LLC

(Jack) Jon Anthony LeDuc

555 Sunrise Circle
Green Bay, WI 54302

Office: 920.785.0228
Cell: 920.217.7598
Jack.Skyking@Comcast.com

Nsight TOWER

Office: 920.617.7100
Fax: 920.617.7021
1046 Gray Ct.
Green Bay, WI 54303

www.nsigthtower.com

Antenna System Specialist

TV
FM
AM

Troubleshooting
Sweep Testing
Infrared Testing

Resonant Results.com
Richard Wood
(608)839-3950

WOODWARD RADIO GROUP

Steve Brown, CPBE, CBNT
Director of Broadcast Engineering
W9APL Amateur Call Sign

Direct 920.831.5659
Fax 920.739.0494 • sbrown@wrcnet.com
PO Box 1519 • Appleton, WI 54912-1519

WOODWARD RADIO GROUP

Token Creek MOBILE TELEVISION

John Salzwedel
President

501 Moravian Valley Road, Waunakee, Wisconsin 53597
Phone: (608) 849-4965 Fax: (608) 849-4035 Cell: (608) 235-9632
Web Page: www.tokencreek.com E-Mail: john@tokencreek.com